

Inclusive. Sustainable. Transformative.

Over 28 years of
empowering and
enriching lives



adani
Foundation

Committed to enabling **inclusive, sustainable, and transformative** development.



Vision

To accomplish a passionate commitment to social obligations towards communities, fostering sustainable and integrated development, thereby improving the quality of life.



Mission

To play the role of a facilitator for the benefit of the people without distinction of caste or community, sector, religion, class or creed, in the fields of education, community health, and promotion of social and economic welfare and upliftment of people in general.



Strategic Pillars



Adani Group's Values

Extension of Adani Group's values following Gandhian philosophy



Bottom-up Approach

Driven by Bottom-up Approach and Long-Term Solutions



Alignment to SDGs

Program design aligned with Sustainable Development Goals



Collaboration

Knowledge partners bring expertise



Commitment to inclusiveness

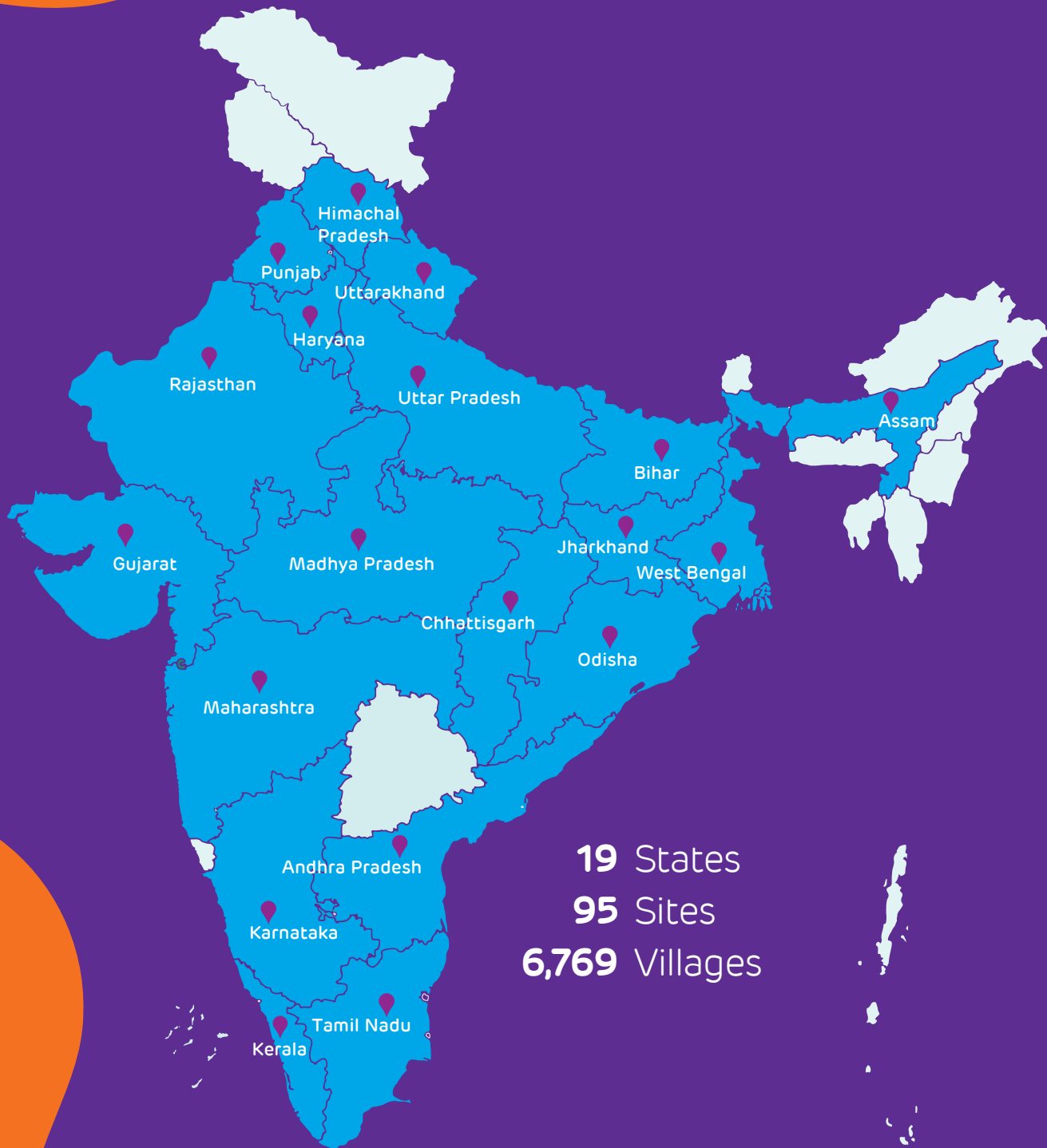
Working relentlessly with vulnerable and marginalised, focus on women and specially-abled



Direct Implementation

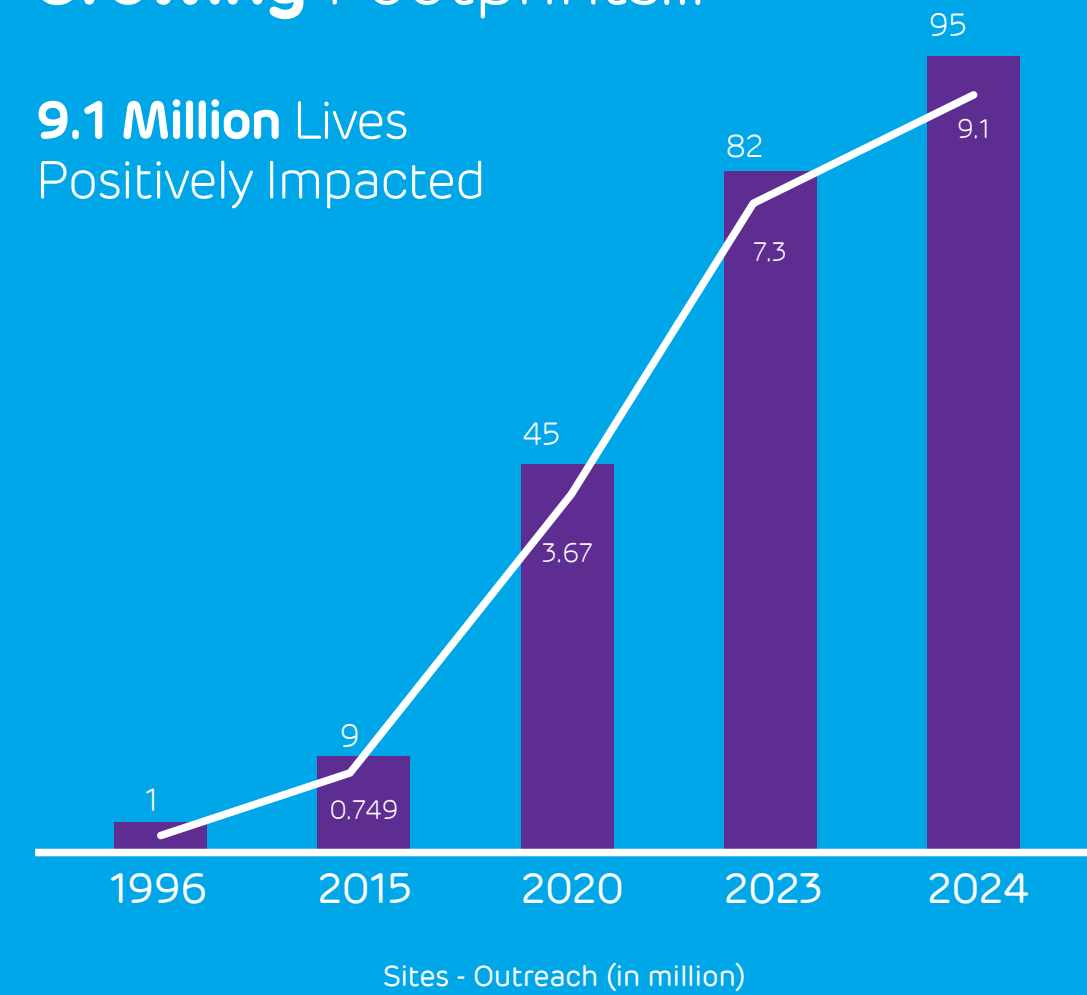
Working with communities directly through well organised team of professionals





Growing Footprints...

9.1 Million Lives
Positively Impacted



...and numbers



Health outreach **2.7m**
Women, child nutrition **275k**



Youth **158k**
Farmers **57k**
Acres of land **30k**



Schools **358**
Students **82k**
Udaan students **477k**



Water storage capacity **15.2m³**



Terrestrial plantation **1.06m**
Mangrove plantation **742k**



Women SHGs **1.5k**
Community outreach **16.9k**





Thrust Areas



EDUCATION

- Quality Education
- Improving Learning Outcomes
- Experiential Learning



SUSTAINABLE LIVELIHOODS

- Off/On-farm, Non-farm activities
- Women's Entrepreneurship
- Skilling of youth
- Promotion of art forms



CLIMATE ACTION

- Biodiversity
- Water Conservation
- Green Energy Promotion
- Waste Management



HEALTH & NUTRITION

- Tertiary Healthcare
- Improving access to healthcare
- Malnutrition management among women, girls, children



COMMUNITY DEVELOPMENT

- Rural Infrastructure
- Sports Promotion
- Relief & Rehabilitation



Education

Touching Lives; Enabling Dreams

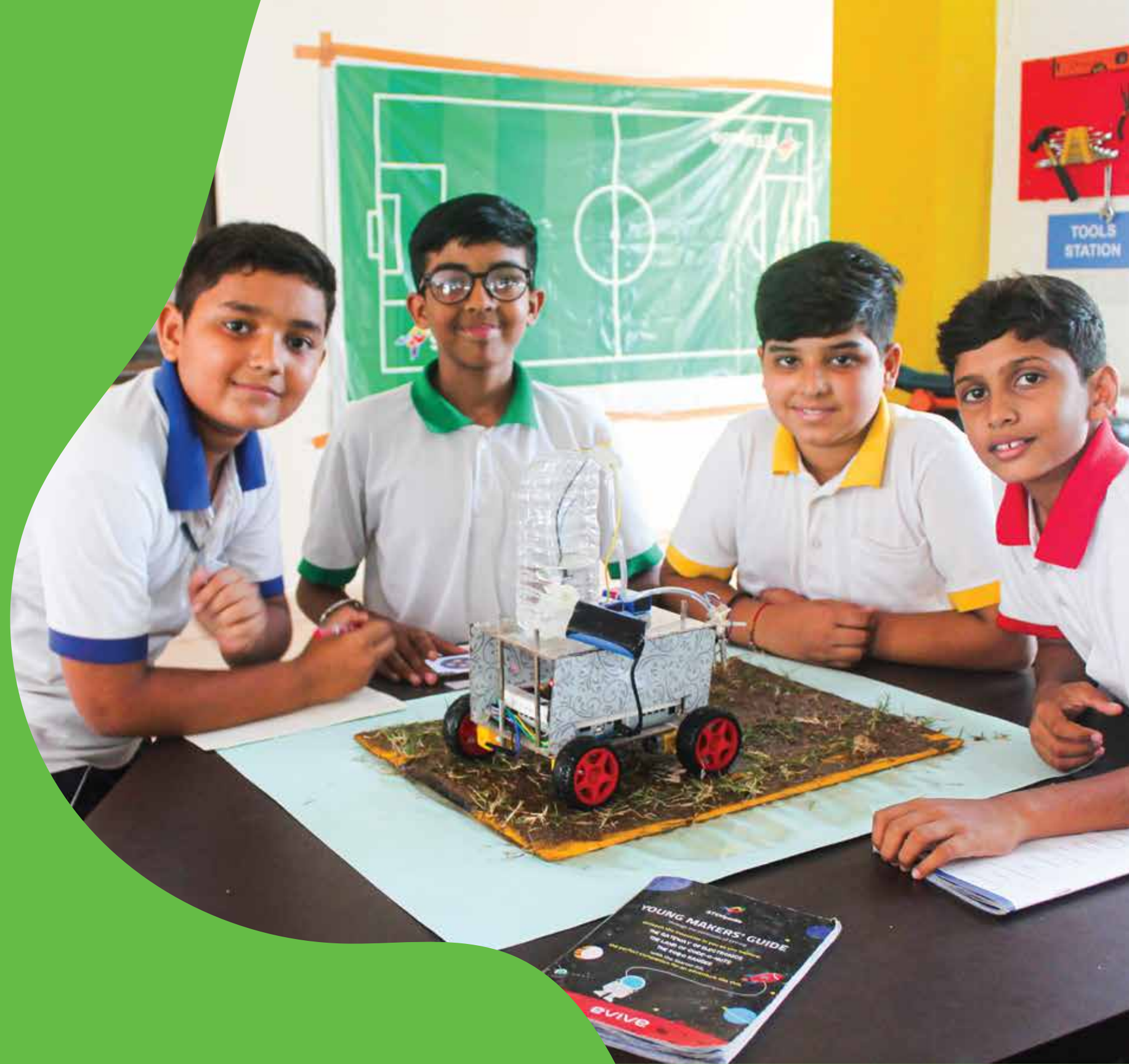


Adani Vidya Mandir (AVM): Transforming Lives Through Education

Adani Vidya Mandir provides cost-free, high-quality education to talented children from underprivileged backgrounds, many of whom are first-generation learners. Established in 2008, AVMs have been empowering over 3,000 students across Ahmedabad, Bhadreshwar, Surguja, and Krishnapatnam. With NABET-accredited campuses, global collaborations (NIE Singapore, UNICEF, Adobe, Google), and a focus on mental health, life skills, and holistic support including meals, books, and transportation, AVM remains a beacon of hope and opportunity, shaping future leaders.

Adani Schools: Blending Tradition, Modernity, and Technology with Indian Values

Adani Schools provide quality education to over 28,000 students, combining academic excellence, holistic development, and value-based learning rooted in Indian spirit. With a focus on mental wellness and life skills, supported by 1,000+ qualified teachers, these schools seamlessly integrate modern, technology-driven practices with traditional values. Equipped with state-of-the-art infrastructure, Adani Schools are dedicated to nurturing future-ready citizens with knowledge, skills, and a strong moral foundation.





Project Utthan: Transforming Government Schools, Empowering Students

Project Utthan enhances foundational literacy, numeracy, and holistic development across 316 government schools, positively impacting over 50,000 students. With an Utthan Sahayak as a catalyst, the initiative strengthens schools, equips students with life skills, and mainstreams academically weak 'Priya' students. It also trains select students for NMMS scholarships, JNV entrance exams, and empowers board exam students from challenging backgrounds. Within three years, Utthan transforms struggling schools into 'ideal temples of learning'.

Project Udaan

A learning-based initiative wherein students are given a chance to visit the Adani facilities to get an insight into the largescale business activities carried out there.

The Udaan project is geared towards making the students realise their potential and inculcate entrepreneurial spirit in them.

The project has facilitated over 7,000 visits benefitting 4.58+ lakh students so far.





Health & Nutrition

Providing affordable, accessible, and quality primary
healthcare and addressing Malnutrition

Adani Hospital Mundra Pvt. Ltd. (AHMPL), Mundra

Secondary care hospital providing medical services to the people of Mundra and nearby villages.

100 beds | 24x7 Emergency

19 specialties | 45,000 patients annually



Gujarat Adani Institute of Medical Sciences (GAIMS), Bhuj

Multi-Specialty Teaching District Hospital under PPP model between Government of Gujarat and Adani.

760 beds | 14 OTs | 63 ICU beds

150 annual MBBS intake

16 PG courses | 61 annual intake

Adani Foundation Vision Care Program

Enhancing vision of vulnerable community members, particularly school-going children, women, elderly persons, and truck drivers. With focus on early detection & prevention of vision problems, the program offers comprehensive eye screenings, distributes spectacles and facilitates referrals. The intervention aligns with the Government of India's National Program for Control of Blindness & Visual Impairment (NPCBVI).



Since August 2024:

1.05 lakh Screenings
23,626 Spectacles distributed
2313 Referrals

Mobile Healthcare Units/Camps

Providing primary support in distant and underserved areas.

700+ Health Camps | 75,000 patients annually

18 Mobile Healthcare Units | 4 lakh annually



Rural Clinics

The rural clinics operated by the Foundation offer essential medical care and services.

14+ Rural Clinics | 1 Wellness Centre

65,000 patients annually

Project SuPoshan

Community-based nutrition intervention program, targeting the intergenerational cycle of Malnutrition by promoting holistic well-being among children, adolescent girls and women.

Since 2016, the project has reached 1,946 villages and 190 slums in 14 states of the country.

179k

Children

429k

Women, Girls

577k

Households

1,240

Sanginis

- Enhancing health & nutrition status of acute Malnourished children up to 5 years of age
- Creating a pool of sustainable resources at the community level
- Strengthening health & nutrition status of children, adolescent girls, pregnant & lactating women
- Instilling knowledge for appropriate behaviour change





Salient Features of the Project:

- Strengthening local resource - Sangini
- Regular screening, follow-up and timely referral of Malnourished children
- Technology-based data evaluation and monitoring
- Preventive & curative support
- Community engagement & awareness building
- Community-based management of Malnutrition



Sustainable Livelihoods

To engage with diverse subsets of communities to
enhance income levels and quality of life

On-farm

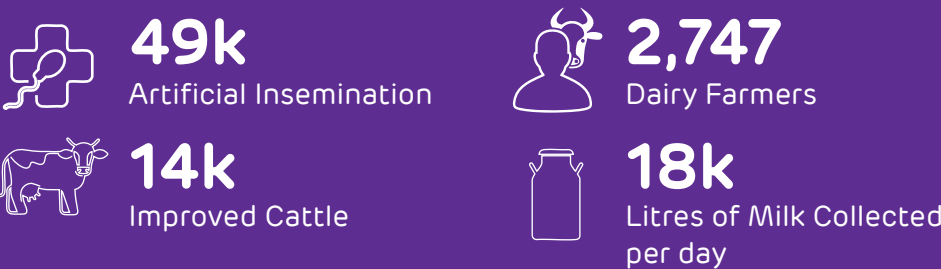
Working with farmers to upgrade their skills and equip them with improved cropping practices.

'Wadi' model | Improved cultivation with proper training and market linkage | Organic manure production



Animal Husbandry & Dairy

Livestock development centres to facilitate training on improved animal rearing practices |
Establishing & running village-level milk collection centres | Breed improvement of cattle |
Promotion of fodder cultivation | Cattle health camps & vaccinations



Off-farm

Facilitating farmers and women entrepreneurs to collectivise as producer companies, facilitating home-based and other entrepreneurial ventures of women.

 **1.5k**
Groups

 **17k**
Members

Project Saksham

Enhancing employability and inculcating entrepreneurship with mapping the demands of industries of getting trained manpower across 15 states.

 **1,66,533**
Trainees

 **75+**
Courses

 **43**
Centres

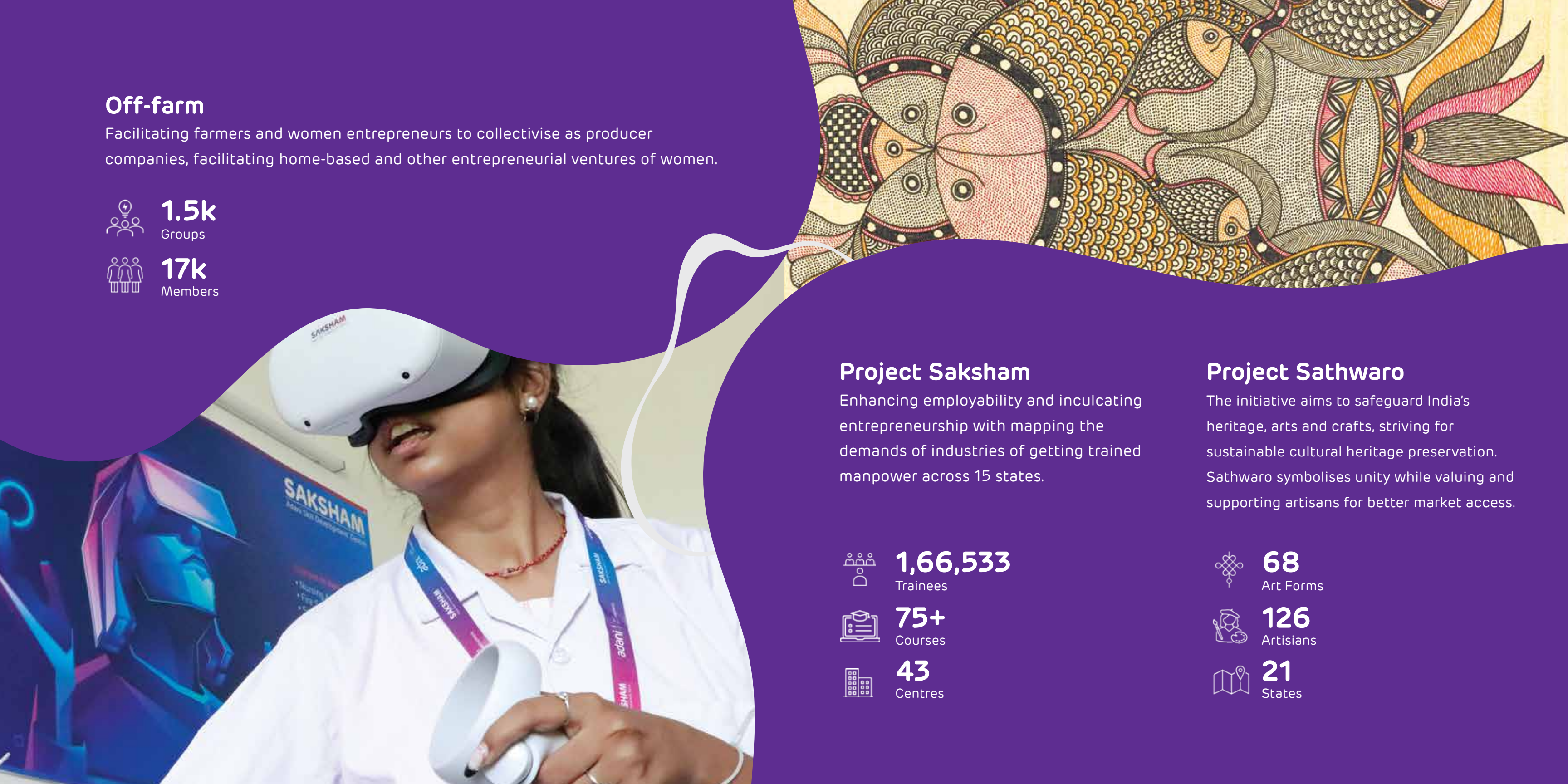
Project Sathwaro

The initiative aims to safeguard India's heritage, arts and crafts, striving for sustainable cultural heritage preservation. Sathwaro symbolises unity while valuing and supporting artisans for better market access.

 **68**
Art Forms

 **126**
Artisans

 **21**
States





Community Development

Bolstering growth of communities through their engagement, infrastructure development, promotion of sports, facilitating linkages with government schemes and providing relief during natural calamities



Meri Sangini
Meri Margdarshika
(MSMM)

₹15.53 Cr

Worth Govt Schemes
facilitated through MSMM

Youths engaged
through sports
initiatives

10,000+

Total length of
cement concrete
roads constructed

6,034 metres



Climate Action

Working towards achieving climate resilience through
afforestation, water augmentation and waste management

Terrestrial and marine plantation

- 7.42 lakh mangrove plantation covering 13.2 Ha along the Mundra coastline
- 10.67 lakh terrestrial plantation at various locations



Large-scale water conservation

- 1,400+ structures
- 15.2 million litres additional capacity
- 330 Rooftop Rainwater Harvesting Structures
- 628 well/borewell recharge structures



Key Awards & Accolades



Organization of the Year - ASOC



Best Practice in Digital Transformation to ASOC in the Innovation category by CII

3rd National Water Award from Ministry of Jal Shakti

2nd Prize for 'Best Industry for CSR activities'

– Adani Foundation, Gujarat

National E-governance Award (Silver) from DARPG, GoI and

CSR Impact Award in Education from CSR Box – Gyanodaya

International Green School Award 2023 - Adani Vidya

Mandir, Ahmedabad's Global Recognition on September 15, 2023, at the 7th NYC Green School Conference 2023

Brainfeed School Excellence Awards and **Education Today Special Jury Award** – Adani Vidya Mandir, Ahmedabad

CII National Awards for Excellence in Water Management
- Adani Ports & Special Economic Zone

CSR Project of the Year Award 2022 in 9th India CSR Summit – Fortune SuPoshan

Brandon Hall Group - Best Advance in Unique Learning Technology – Adani Skill Development Centre (ASDC)





adaniact@adanifoundation.com

Education | Health & Nutrition |
Sustainable Livelihoods |
Climate Action | Community Development



Adani Foundation
7th Floor, Aravalli Building,
Near Adani Corporate House,
Shantigram, S G Highway
Ahmedabad 382421
Gujarat, India

